



## Recording Ultrasound Scanning Data

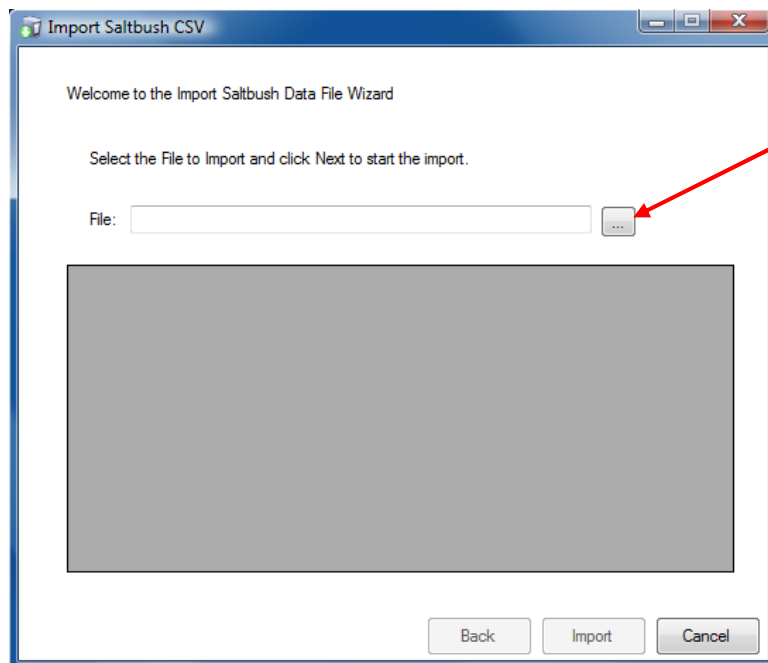
When Austins perform scanning all data is submitted by Austins directly to Registry in electronic form. This is then loaded directly into ILR2(Breedplan) at PBB.

Austins will supply the breeder with a printed copy of the scanning data along with an electronic file. This file is CSV format which can be viewed using a spreadsheet program and/or imported directly into HerdMASTER 4.

There is no need to submit the Scanning data to registry from HerdMASTER 4. Importing the data into HerdMASTER simply allows the Breeder to store a local copy of the information in their HerdMASTER program.

### To import the Scanning data into HerdMaster 4.

1. Click *Utilities | Import | Saltbush Import*



2. Click the File button and select the CSV file supplied by Austins and a preview of the data will be displayed.
3. Click Import
4. Scanning Data can then be viewed in the Animal Details screen, under the Traits Tab.