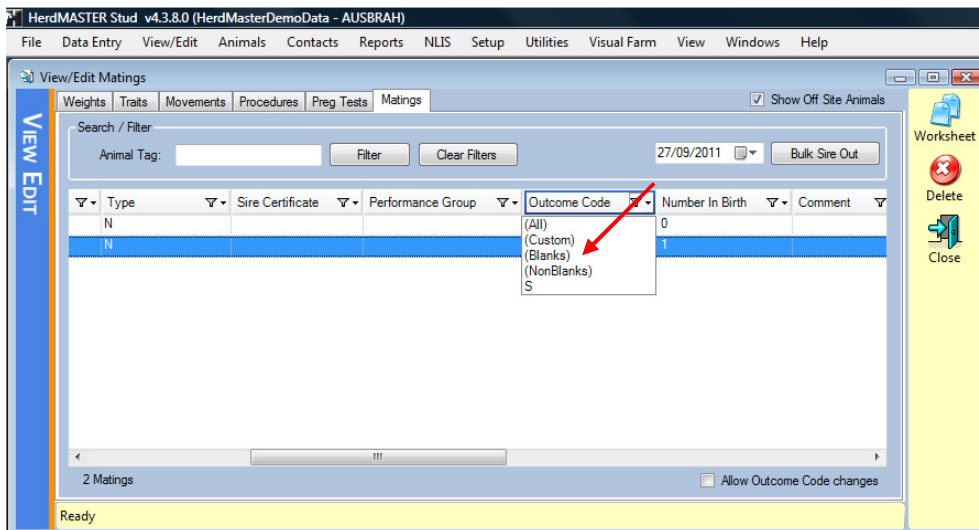


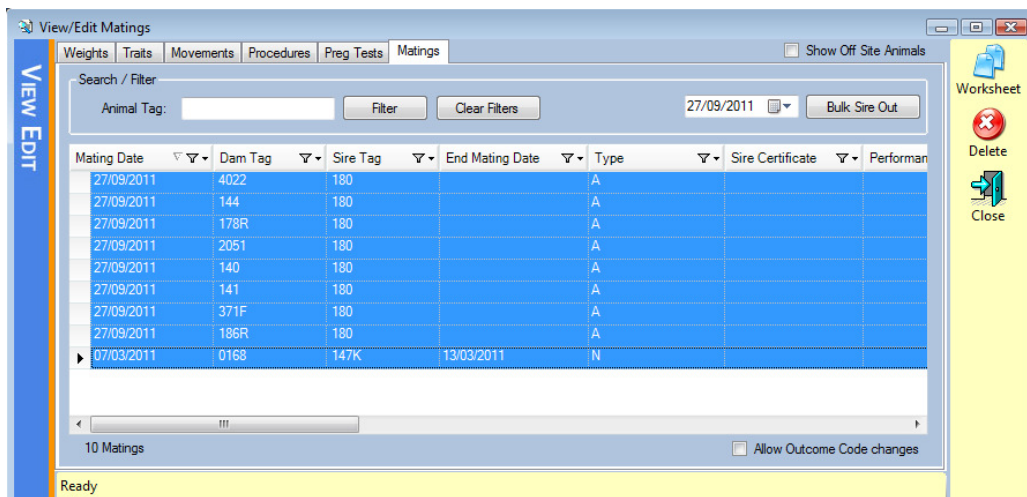


Find Outstanding Matings

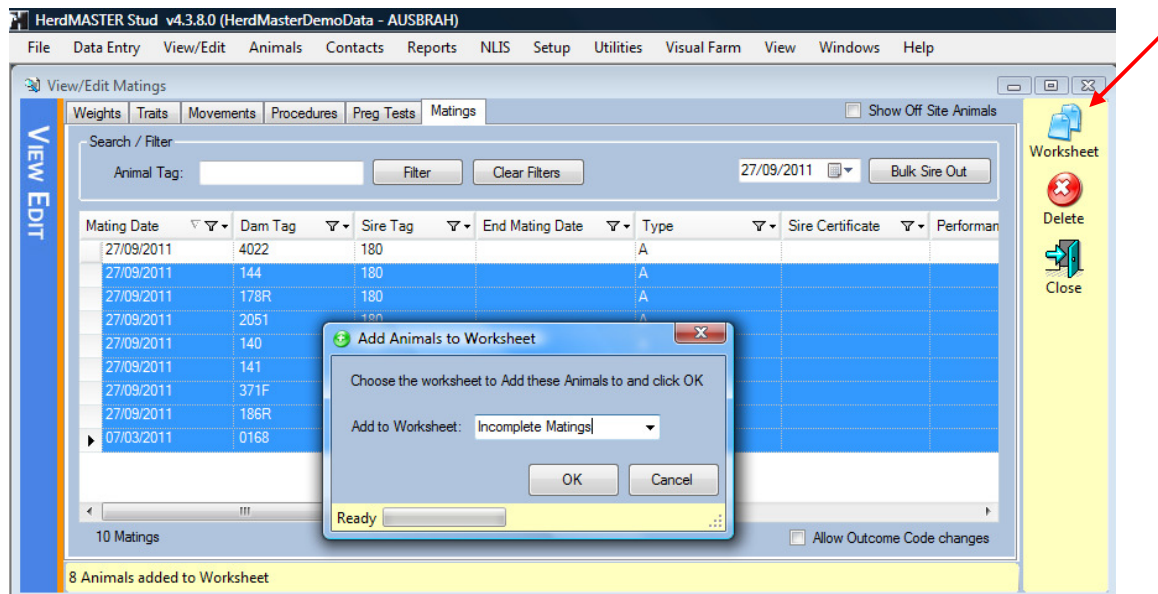
1. Click the View/Edit Menu and select Matings
2. In the Matings screen, scroll across to the Outcome field
3. Click the filter icon (funnel) in the column heading and choose (Blanks) from the list of filters.



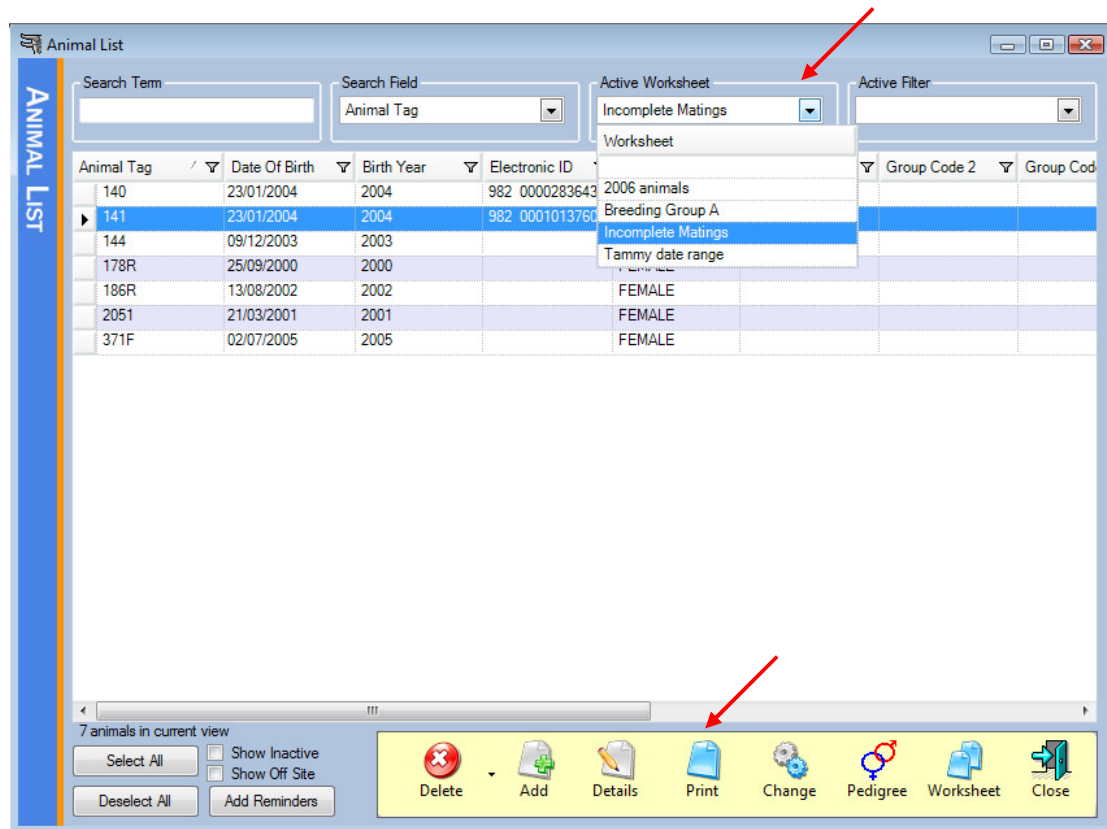
4. This will then display all matings that have not been assigned an outcome.
5. Then select all the matings by clicking the first mating, hold down shift and click the last. They will show as highlighted in blue when selected.



- Click the worksheet button, and type in a name for it and Click OK. Click Yes to add the animals.



- To use the worksheet go to Animals | Animal List. Select the new worksheet you have created from the drop down list at the top of the screen.



- You will now have a list of incomplete matings. If you wish to print this click the print button.